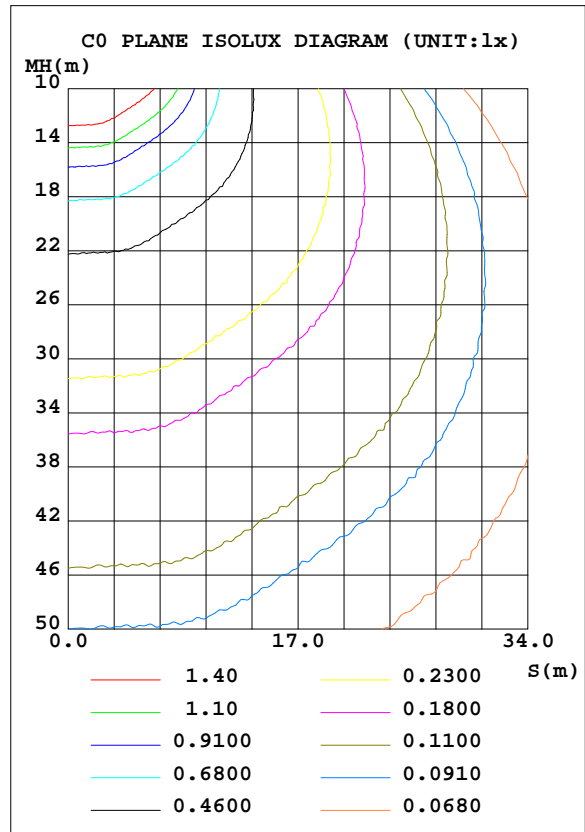
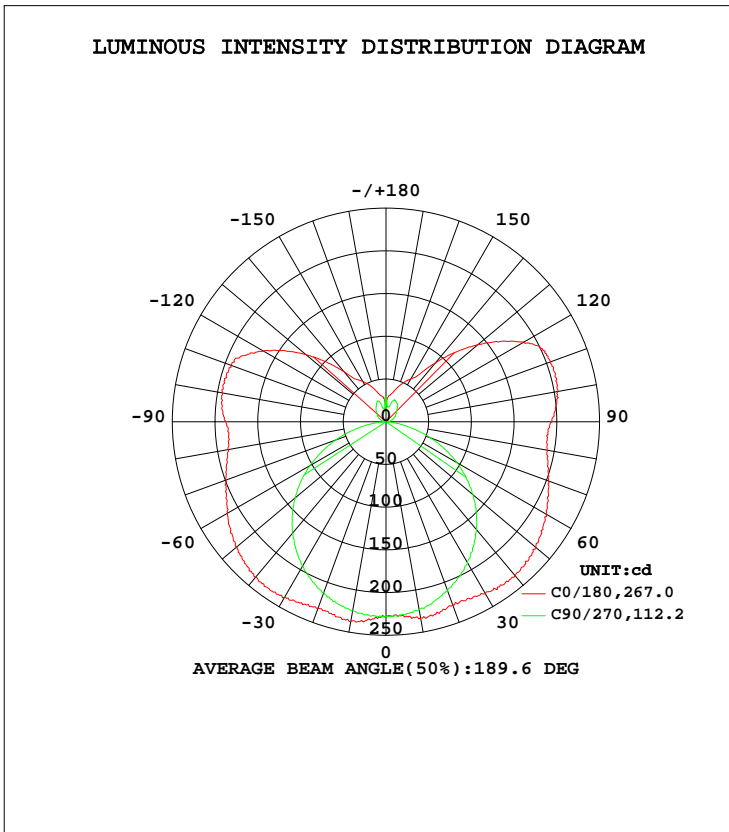


LUMINAIRE PHOTOMETRIC TEST REPORT

Test:U:120.17V I:0.2395A P:28.560W PF:0.9919 Freq:60.00Hz Lamp Flux:1584.97x1 lm		
NAME:	TYPE:	WEIGHT:
SPEC.:	DIM.:	SERIAL No.:
MFR.:	SUR.:	Shielding Angle:

DATA OF LAMP		PHOTOMETRIC DATA Eff: 55.50 lm/W			
MODEL	VN27-36-30S-952C5-MVTD-SB00-4000K	I _{max} (cd)	239.8	S/MH(C0/180)	1.60
NOMINAL POWER(W)	28	LOR(%)	100.0	S/MH(C90/270)	1.27
RATED VOLTAGE(V)	120	TOTAL FLUX(lm)	1585.0	η UP, DN(C0-180)	17.4, 32.6
NOMINAL FLUX(lm)	1584.97	CIE CLASS	SEMI-D.	η UP, DN(C180-360)	17.0, 33.1
LAMPS INSIDE	1	η up(%)	34.4	CIBSE SHR NOM	1.50
TEST VOLTAGE(V)	120	η down(%)	65.6	CIBSE SHR MAX	1.55



C Range: 0 - 360DEG
 C Interval: 22.5DEG
 Test Speed: HIGH
 Temperature:25.1DEG
 Operators:Wilson
 Test Date:2022-12-09

γ Range: 0 - 180DEG
 γ Interval: 0.5DEG
 Test System:EVERFINE GO-R5000_V2 SYSTEM V2.00.444
 Humidity:60.5%
 Test Distance:2.617m [K=1.0000]
 Remarks: File No.: WT-F-504-3206-01-A

Checker: Near Gao

Assessor: Akin Xu

ZONAL FLUX DIAGRAM

ZONAL FLUX DIAGRAM:

γ	C0	C45	C90	C135	C180	C225	C270	C315	γ	Φ zone	Φ total	%lum, lamp
10	232.9	227.7	223.8	233.1	237.6	233.2	225.0	229.3	0- 10	21.89	21.89	1.38,1.38
20	228.2	223.4	210.8	226.2	232.3	227.9	213.2	225.7	10- 20	64.48	86.37	5.45,5.45
30	232.6	208.5	190.9	214.5	237.1	216.5	195.0	213.1	20- 30	101.3	187.7	11.8,11.8
40	235.2	198.2	164.9	207.6	237.6	205.7	169.6	206.1	30- 40	131.4	319.1	20.1,20.1
50	229.1	185.6	133.5	194.6	227.8	191.4	138.8	196.5	40- 50	151.1	470.2	29.7,29.7
60	216.3	165.7	96.28	175.3	214.4	169.9	102.5	179.2	50- 60	157.7	627.9	39.6,39.6
70	202.2	141.7	55.95	153.5	199.1	145.3	62.56	158.3	60- 70	151.6	779.6	49.2,49.2
80	191.7	121.8	17.62	135.6	187.6	122.6	23.15	139.2	70- 80	136.7	916.3	57.8,57.8
90	194.2	121.0	1.406	134.9	187.5	115.0	1.039	135.8	80- 90	124.2	1040	65.6,65.6
100	204.3	130.4	4.058	141.0	194.7	123.2	2.790	146.1	90-100	128.7	1169	73.8,73.8
110	205.4	129.4	8.370	134.4	193.2	115.8	6.571	147.4	100-110	127.3	1296	81.8,81.8
120	186.8	101.8	12.54	103.8	165.5	88.50	10.37	118.6	110-120	107.5	1404	88.6,88.6
130	140.8	68.79	15.69	69.62	122.4	57.98	13.31	82.12	120-130	76.49	1480	93.4,93.4
140	90.42	49.69	20.84	52.16	76.88	45.08	18.31	55.19	130-140	47.52	1528	96.4,96.4
150	58.10	42.44	25.32	43.42	54.75	38.43	22.82	45.66	140-150	28.55	1557	98.2,98.2
160	44.40	34.81	27.06	34.66	41.01	31.77	25.79	36.26	150-160	17.66	1574	99.3,99.3
170	32.56	20.62	17.81	25.38	30.68	28.07	16.11	30.98	160-170	8.648	1583	99.9,99.9
180	11.04	11.04	11.04	11.04	11.05	11.05	11.05	11.05	170-180	2.161	1585	100,100
DEG	LUMINOUS INTENSITY:cd									UNIT:lm		

Conical surface Flux(90deg): 392.97 lm

%lum = 24.8%
%lamp = 24.8%

Conical surface Flux(120deg): 627.93 lm

%lum = 39.6%
%lamp = 39.6%

C Range: 0 - 360DEG
C Interval: 22.5DEG
Test Speed: HIGH
Temperature:25.1DEG
Operators:Wilson
Test Date:2022-12-09

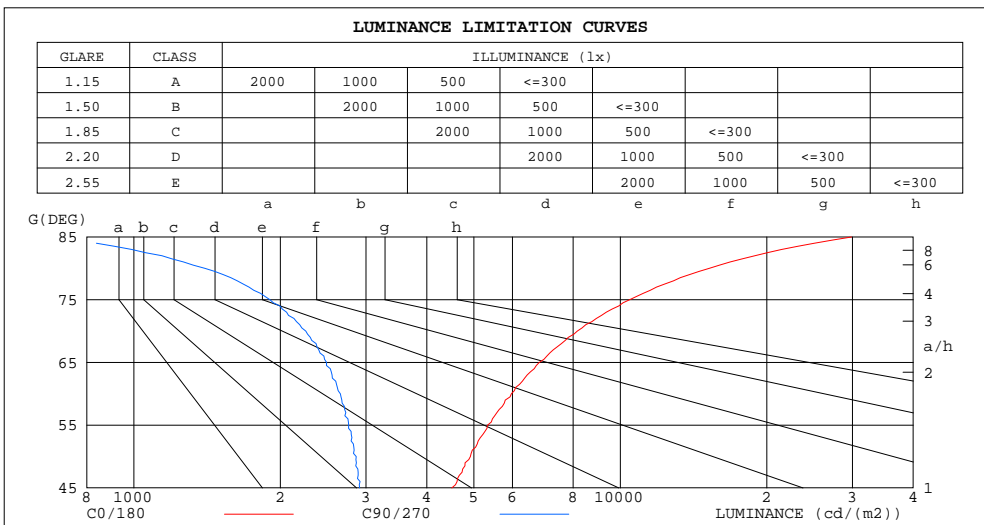
γ Range: 0 - 180DEG
γ Interval: 0.5DEG
Test System:EVERFINE GO-R5000_V2 SYSTEM V2.00.444
Humidity:60.5%
Test Distance:2.617m [K=1.0000]
Remarks: File No.: WT-F-504-3206-01-A

Checker: Near Gao

Assessor: Akin Xu

LUMINANCE LIMITATION CURVES

Test:U:120.17V I:0.2395A P:28.560W PF:0.9919 Freq:60.00Hz Lamp Flux:1584.97x1 lm		
NAME:	TYPE:	WEIGHT:
SPEC.:	DIM.:	SERIAL No.:
MFR.:	SUR.:	Shielding Angle:



LUMINANCE cd/(m2)		
G(DEG)	C0/180	C90/270
85	29873	662
80	15228	1400
75	10451	1905
70	8156	2257
65	6812	2489
60	5969	2657
55	5334	2765
50	4916	2865
45	4503	2912

C Range: 0 - 360DEG
 C Interval: 22.5DEG
 Test Speed: HIGH
 Temperature: 25.1DEG
 Operators: Wilson
 Test Date: 2022-12-09

γ Range: 0 - 180DEG
 γ Interval: 0.5DEG
 Test System: EVERFINE GO-R5000_V2 SYSTEM V2.00.444
 Humidity: 60.5%
 Test Distance: 2.617m [K=1.0000]
 Remarks: File No.: WT-F-504-3206-01-A

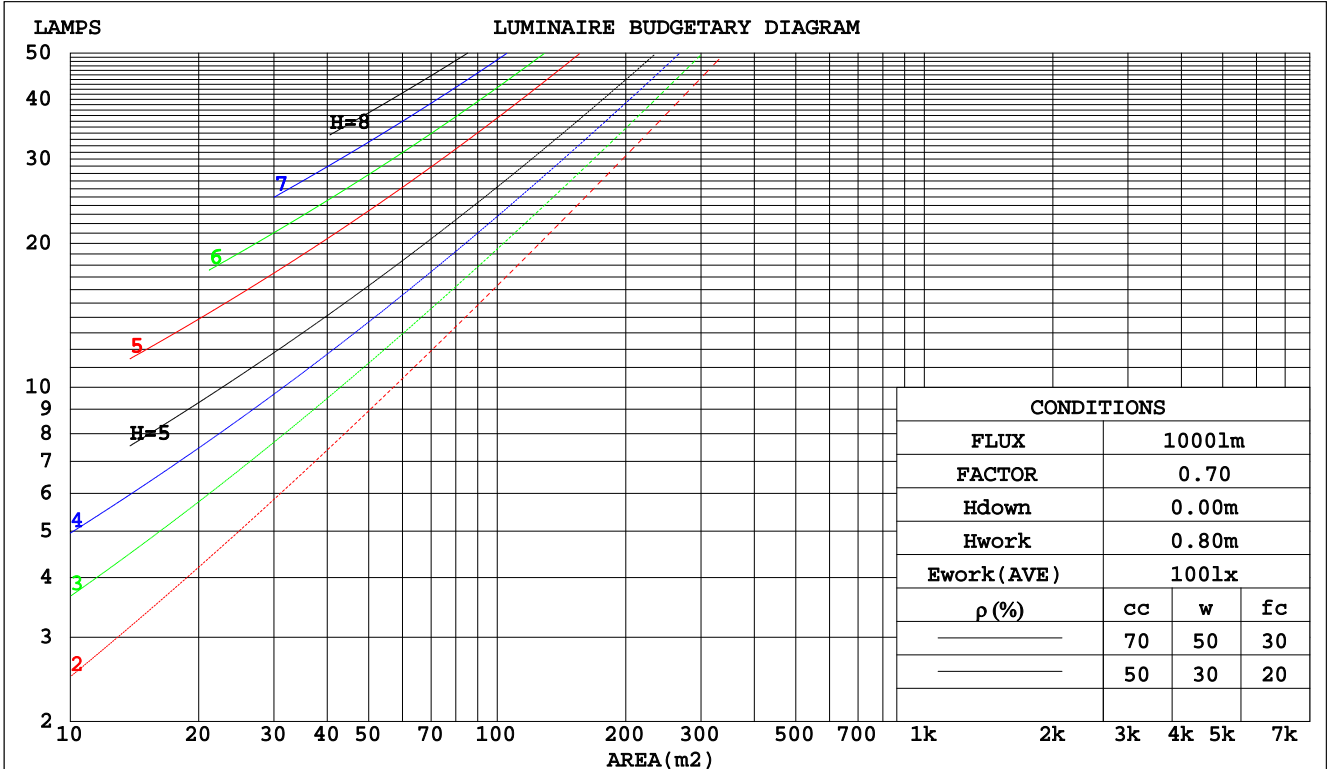
Checker: Near Gao

Assessor: Akin Xu

CU AND LUMINAIRE BUDGETARY ESTIMATE DIAGRAM

Test:U:120.17V I:0.2395A P:28.560W PF:0.9919 Freq:60.00Hz Lamp Flux:1584.97x1 lm		
NAME:	TYPE:	WEIGHT:
SPEC.:	DIM.:	SERIAL No.:
MFR.:	SUR.:	Shielding Angle:

pcc	80%			70%			50%			30%			10%			0
	50%	30%	10%	50%	30%	10%	50%	30%	10%	50%	30%	10%	50%	30%	10%	0
pw																
pfc	20%			20%			20%			20%			20%			0
RCR	RCR:Room Cavity Ratio						Coefficients of Utilization(CU)									
0.0	1.11	1.11	1.11	1.04	1.04	1.04	.92	.92	.92	.81	.81	.81	.70	.70	.70	.66
1.0	.92	.86	.81	.86	.81	.77	.75	.72	.68	.66	.63	.60	.57	.54	.52	.48
2.0	.78	.70	.64	.73	.66	.60	.64	.59	.54	.56	.51	.47	.48	.44	.41	.37
3.0	.68	.59	.52	.63	.55	.49	.55	.49	.44	.48	.43	.39	.41	.37	.34	.30
4.0	.59	.50	.43	.56	.47	.41	.49	.42	.36	.42	.37	.32	.36	.32	.28	.25
5.0	.52	.43	.36	.49	.41	.34	.43	.36	.31	.38	.32	.27	.32	.28	.24	.21
6.0	.47	.38	.31	.44	.36	.29	.39	.32	.27	.34	.28	.24	.29	.24	.21	.18
7.0	.42	.33	.27	.40	.31	.26	.35	.28	.23	.31	.25	.21	.26	.22	.18	.16
8.0	.38	.29	.24	.36	.28	.23	.32	.25	.20	.28	.22	.18	.24	.20	.16	.14
9.0	.35	.26	.21	.33	.25	.20	.29	.23	.18	.26	.20	.16	.22	.18	.14	.12
10.0	.32	.24	.19	.30	.23	.18	.27	.20	.16	.24	.18	.15	.21	.16	.13	.11



C Range: 0 - 360DEG
 C Interval: 22.5DEG
 Test Speed: HIGH
 Temperature: 25.1DEG
 Operators: Wilson
 Test Date: 2022-12-09

γ Range: 0 - 180DEG
 γ Interval: 0.5DEG
 Test System: EVERFINE GO-R5000_V2 SYSTEM V2.00.444
 Humidity: 60.5%
 Test Distance: 2.617m [K=1.0000]
 Remarks: File No.: WT-F-504-3206-01-A

Checker: Near Gao

Assessor: Akin Xu

WEC AND CCEC

Test:U:120.17V I:0.2395A P:28.560W PF:0.9919 Freq:60.00Hz Lamp Flux:1584.97x1 lm		
NAME:	TYPE:	WEIGHT:
SPEC.:	DIM.:	SERIAL No.:
MFR.:	SUR.:	Shielding Angle:

ρcc	80%			70%			50%			30%			10%			0
ρw	50%	30%	10%	50%	30%	10%	50%	30%	10%	50%	30%	10%	50%	30%	10%	0
ρfc	20%			20%			20%			20%			20%			0
RCR	RCR:Room Cavity Ratio						Wall Exitance Coefficients(WEC)									
0.0																
1.0	.386	.220	.070	.368	.210	.067	.335	.192	.061	.305	.176	.056	.277	.161	.052	
2.0	.330	.181	.056	.314	.173	.053	.284	.158	.049	.256	.144	.045	.231	.131	.041	
3.0	.292	.155	.047	.277	.149	.045	.250	.135	.041	.225	.123	.038	.201	.111	.034	
4.0	.262	.136	.040	.249	.130	.038	.224	.119	.035	.201	.108	.032	.179	.097	.030	
5.0	.238	.121	.035	.226	.116	.034	.203	.106	.031	.181	.096	.028	.162	.086	.026	
6.0	.218	.109	.031	.207	.104	.030	.186	.095	.028	.166	.086	.025	.147	.078	.023	
7.0	.201	.099	.028	.191	.095	.027	.171	.086	.025	.153	.078	.023	.136	.071	.021	
8.0	.186	.091	.026	.177	.087	.025	.159	.079	.023	.142	.072	.021	.126	.065	.019	
9.0	.173	.084	.023	.165	.080	.023	.148	.073	.021	.132	.066	.019	.117	.060	.017	
10.0	.162	.078	.022	.154	.074	.021	.138	.068	.019	.124	.061	.017	.110	.055	.016	

ρcc	80%			70%			50%			30%			10%			0
ρw	50%	30%	10%	50%	30%	10%	50%	30%	10%	50%	30%	10%	50%	30%	10%	0
ρfc	20%			20%			20%			20%			20%			0
RCR	RCR:Room Cavity Ratio						Ceiling Cavity Exitance Coefficients(CCEC)									
0.0	.452	.452	.452	.386	.386	.386	.264	.264	.264	.152	.152	.152	.048	.048	.048	
1.0	.450	.419	.392	.385	.360	.338	.263	.248	.233	.151	.143	.136	.049	.046	.044	
2.0	.443	.397	.359	.379	.342	.310	.260	.237	.216	.150	.138	.127	.048	.045	.041	
3.0	.436	.382	.338	.374	.329	.293	.257	.229	.206	.148	.134	.121	.048	.043	.040	
4.0	.428	.370	.325	.368	.319	.282	.253	.223	.199	.146	.130	.118	.047	.042	.039	
5.0	.421	.360	.315	.361	.312	.274	.249	.218	.194	.144	.128	.115	.046	.042	.038	
6.0	.414	.352	.309	.356	.305	.269	.245	.214	.190	.142	.126	.113	.046	.041	.037	
7.0	.407	.346	.304	.350	.300	.265	.242	.210	.187	.140	.124	.112	.045	.041	.037	
8.0	.400	.341	.300	.345	.296	.261	.238	.208	.185	.139	.122	.111	.045	.040	.037	
9.0	.394	.336	.297	.340	.292	.259	.235	.205	.184	.137	.121	.110	.044	.040	.036	
10.0	.389	.332	.295	.335	.288	.257	.232	.203	.183	.136	.120	.109	.044	.039	.036	

C Range: 0 - 360DEG
 C Interval: 22.5DEG
 Test Speed: HIGH
 Temperature:25.1DEG
 Operators:Wilson
 Test Date:2022-12-09

γ Range: 0 - 180DEG
 γ Interval: 0.5DEG
 Test System:EVERFINE GO-R5000_V2 SYSTEM V2.00.444
 Humidity:60.5%
 Test Distance:2.617m [K=1.0000]
 Remarks: File No.: WT-F-504-3206-01-A

Checker: Near Gao

Assessor: Akin Xu

UGR(Unified Glare Rating) Table

Test:U:120.17V I:0.2395A P:28.560W PF:0.9919 Freq:60.00Hz										
Lamp Flux:1584.97x1 lm										
NAME:		TYPE:				WEIGHT:				
SPEC.:		DIM.:				SERIAL No.:				
MFR.:		SUR.:				Shielding Angle:				
ceiling/cavity	0.7	0.7	0.5	0.5	0.3	0.7	0.7	0.5	0.5	0.3
walls	0.5	0.3	0.5	0.3	0.3	0.5	0.3	0.5	0.3	0.3
working plane	0.2	0.2	0.2	0.2	0.2	0.2	0.2	0.2	0.2	0.2
Room dimensions	Viewed crosswise					Viewed endwise				
x = 2H y = 2H	17.0	18.2	17.7	19.0	19.8	13.7	14.9	14.4	15.6	16.5
3H	20.0	21.1	20.7	21.9	22.8	15.1	16.2	15.8	17.0	17.9
4H	21.7	22.7	22.4	23.5	24.4	15.6	16.7	16.4	17.4	18.4
6H	23.6	24.6	24.4	25.4	26.3	16.0	16.9	16.7	17.7	18.7
8H	24.7	25.6	25.5	26.4	27.4	16.0	17.0	16.8	17.8	18.7
12H	26.0	26.9	26.7	27.7	28.6	16.0	16.9	16.8	17.7	18.7
4H 2H	17.5	18.5	18.3	19.3	20.2	15.2	16.2	15.9	17.0	17.9
3H	20.7	21.6	21.5	22.4	23.4	16.9	17.8	17.7	18.6	19.6
4H	22.6	23.4	23.4	24.3	25.3	17.6	18.4	18.4	19.2	20.2
6H	24.7	25.5	25.6	26.3	27.4	18.1	18.9	18.9	19.7	20.7
8H	26.0	26.6	26.8	27.5	28.5	18.3	19.0	19.1	19.8	20.9
12H	27.4	28.0	28.2	28.9	29.9	18.4	19.0	19.2	19.9	20.9
8H 4H	22.9	23.6	23.7	24.4	25.5	19.1	19.8	19.9	20.6	21.7
6H	25.3	25.9	26.2	26.8	27.9	20.1	20.6	20.9	21.5	22.6
8H	26.8	27.3	27.7	28.2	29.3	20.4	21.0	21.3	21.9	23.0
12H	28.5	28.9	29.4	29.8	31.0	20.8	21.2	21.7	22.1	23.2
12H 4H	22.9	23.5	23.7	24.4	25.4	19.6	20.3	20.5	21.1	22.2
6H	25.4	25.9	26.3	26.8	27.9	20.9	21.4	21.8	22.3	23.4
8H	27.0	27.4	27.9	28.3	29.5	21.5	22.0	22.4	22.9	24.0
Variations with the observer position at spacings(CIE Pub.117):										
S = 1.0H	+ 0.1 / - 0.1					+ 0.1 / - 0.1				
1.5H	+ 0.2 / - 0.3					+ 0.2 / - 0.3				
2.0H	+ 0.3 / - 0.4					+ 0.3 / - 0.4				

CIE Pub.117, 1585 lm Total Lamp Luminous Flux Corrected (8log(F/F0) = 1.6)
 Area: 0.07248 m2

C Range: 0 - 360DEG
 C Interval: 22.5DEG
 Test Speed: HIGH
 Temperature:25.1DEG
 Operators:Wilson
 Test Date:2022-12-09

γ Range: 0 - 180DEG
 γ Interval: 0.5DEG
 Test System:EVERFINE GO-R5000_V2 SYSTEM V2.00.444
 Humidity:60.5%
 Test Distance:2.617m [K=1.0000]
 Remarks: File No.: WT-F-504-3206-01-A

Checker: Near Gao

Assessor: Akin Xu

UTILIZATION FACTORS TABLE

Test:U:120.17V I:0.2395A P:28.560W PF:0.9919 Freq:60.00Hz Lamp Flux:1584.97x1 lm		
NAME:	TYPE:	WEIGHT:
SPEC.:	DIM.:	SERIAL No.:
MFR.:	SUR.:	Shielding Angle:

REFLECTANCE										
Ceiling	0.8	0.8	0.8	0.7	0.7	0.7	0.5	0.5	0.5	0
Walls	0.7	0.5	0.3	0.7	0.5	0.3	0.7	0.5	0.3	0
Working plane	0.2	0.2	0.2	0.2	0.2	0.2	0.2	0.2	0.2	0
ROOM INDEX	UTILIZATION FACTORS(PERCENT) k(RI) x RCR = 5									
k = 0.60	42	30	22	41	29	22	38	28	21	14
0.80	51	38	29	49	37	29	45	34	27	19
1.00	59	45	36	56	43	35	51	43	34	24
1.25	65	52	43	62	50	42	56	46	39	28
1.50	71	58	49	67	55	47	60	51	44	31
2.00	78	66	57	74	63	55	66	58	51	36
2.50	83	72	63	78	68	61	70	62	56	39
3.00	87	77	69	82	73	66	73	66	60	42
4.00	92	83	76	86	79	72	77	71	65	46
5.00	95	87	81	89	83	77	79	74	69	49
ROOM INDEX	UF(total)									Direct
According to DIN EN 13032-2 2004			Suspended				SHRNOM = 1.25			

C Range: 0 - 360DEG
 C Interval: 22.5DEG
 Test Speed: HIGH
 Temperature:25.1DEG
 Operators:Wilson
 Test Date:2022-12-09

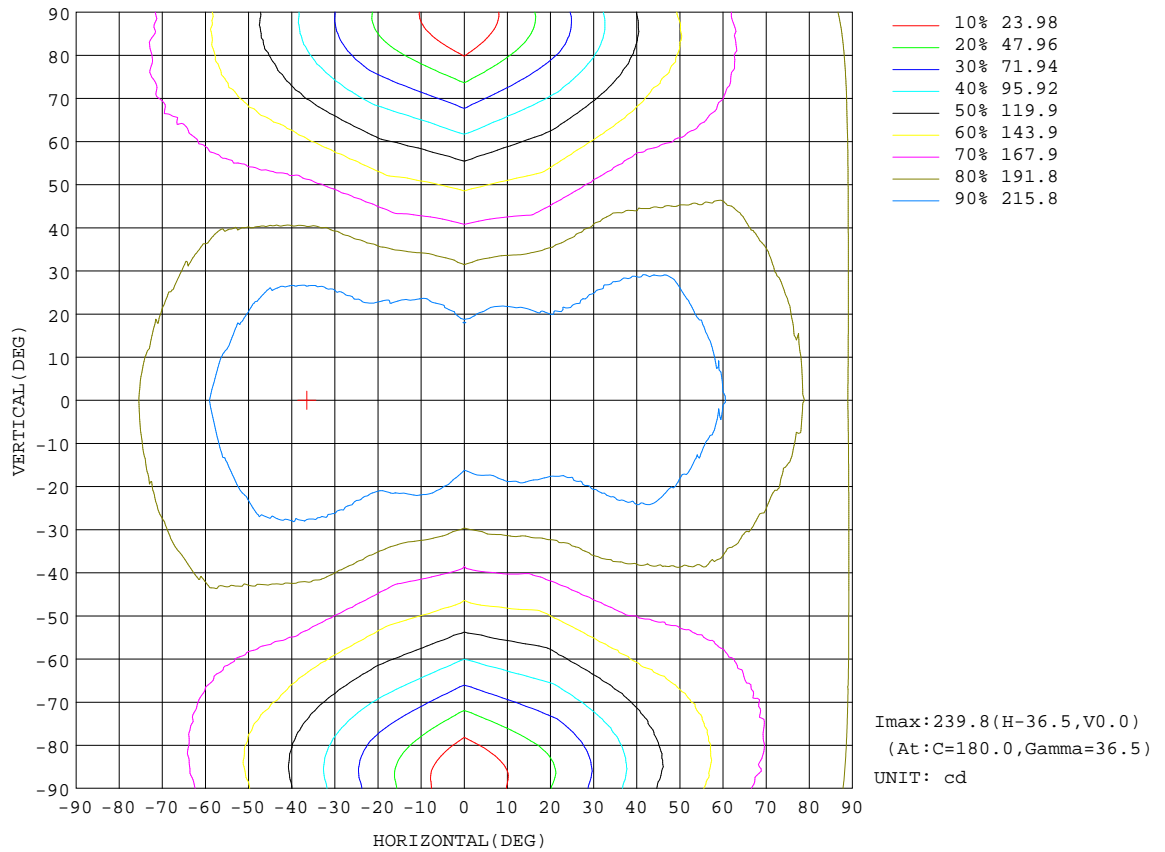
γ Range: 0 - 180DEG
 γ Interval: 0.5DEG
 Test System:EVERFINE GO-R5000_V2 SYSTEM V2.00.444
 Humidity:60.5%
 Test Distance:2.617m [K=1.0000]
 Remarks: File No.: WT-F-504-3206-01-A

Checker: Near Gao

Assessor: Akin Xu

ISOCANDELA DIAGRAM

Test:U:120.17V I:0.2395A P:28.560W PF:0.9919 Freq:60.00Hz Lamp Flux:1584.97x1 lm		
NAME:	TYPE:	WEIGHT:
SPEC.:	DIM.:	SERIAL No.:
MFR.:	SUR.:	Shielding Angle:



C Range: 0 - 360DEG
 C Interval: 22.5DEG
 Test Speed: HIGH
 Temperature: 25.1DEG
 Operators: Wilson
 Test Date: 2022-12-09

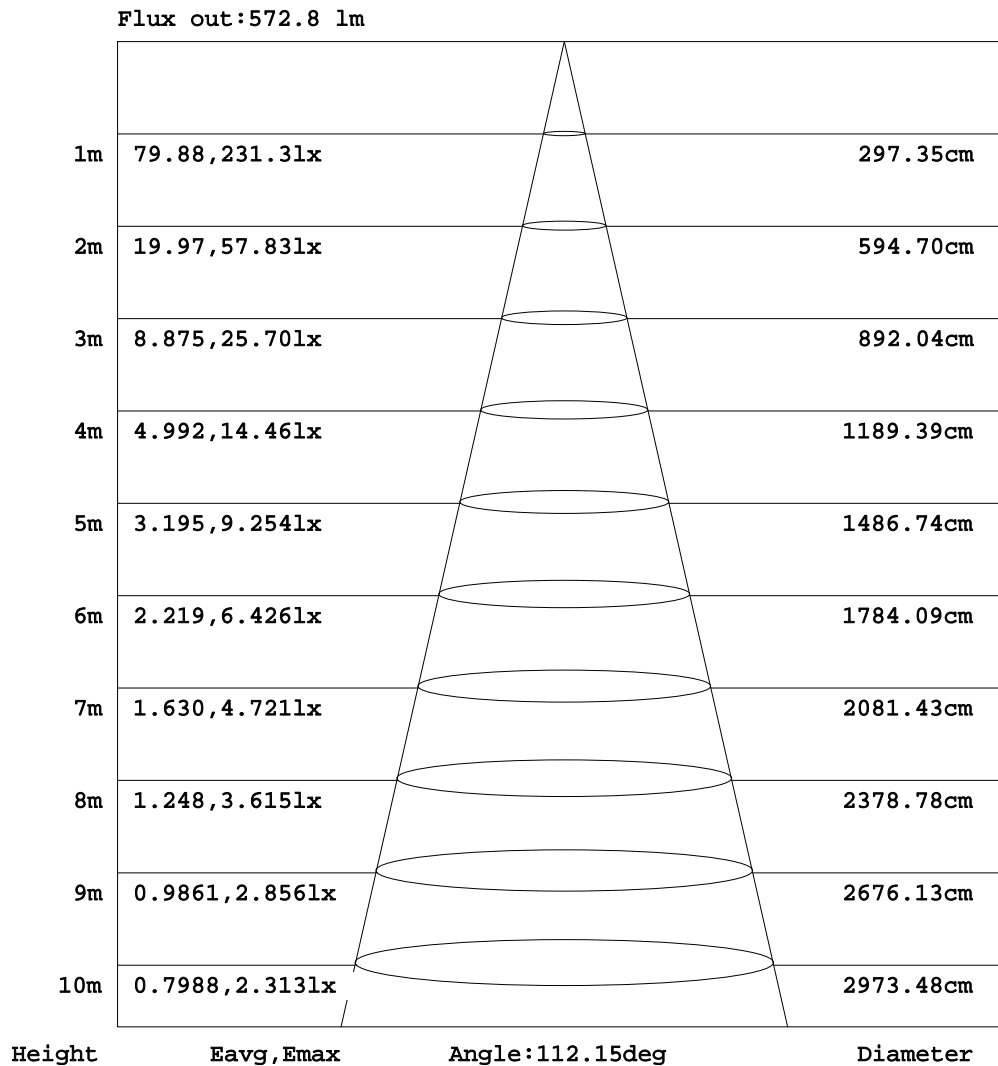
γ Range: 0 - 180DEG
 γ Interval: 0.5DEG
 Test System: EVERFINE GO-R5000_V2 SYSTEM V2.00.444
 Humidity: 60.5%
 Test Distance: 2.617m [K=1.0000]
 Remarks: File No.: WT-F-504-3206-01-A

Checker: Near Gao

Assessor: Akin Xu

AAI Figure

Test:U:120.17V I:0.2395A P:28.560W PF:0.9919 Freq:60.00Hz Lamp Flux:1584.97x1 lm		
NAME:	TYPE:	WEIGHT:
SPEC.:	DIM.:	SERIAL No.:
MFR.:	SUR.:	Shielding Angle:



Note: The Curves indicate the illuminated area and the average illumination when the luminaire is at different distance.

C Range: 0 - 360DEG
 C Interval: 22.5DEG
 Test Speed: HIGH
 Temperature: 25.1DEG
 Operators: Wilson
 Test Date: 2022-12-09

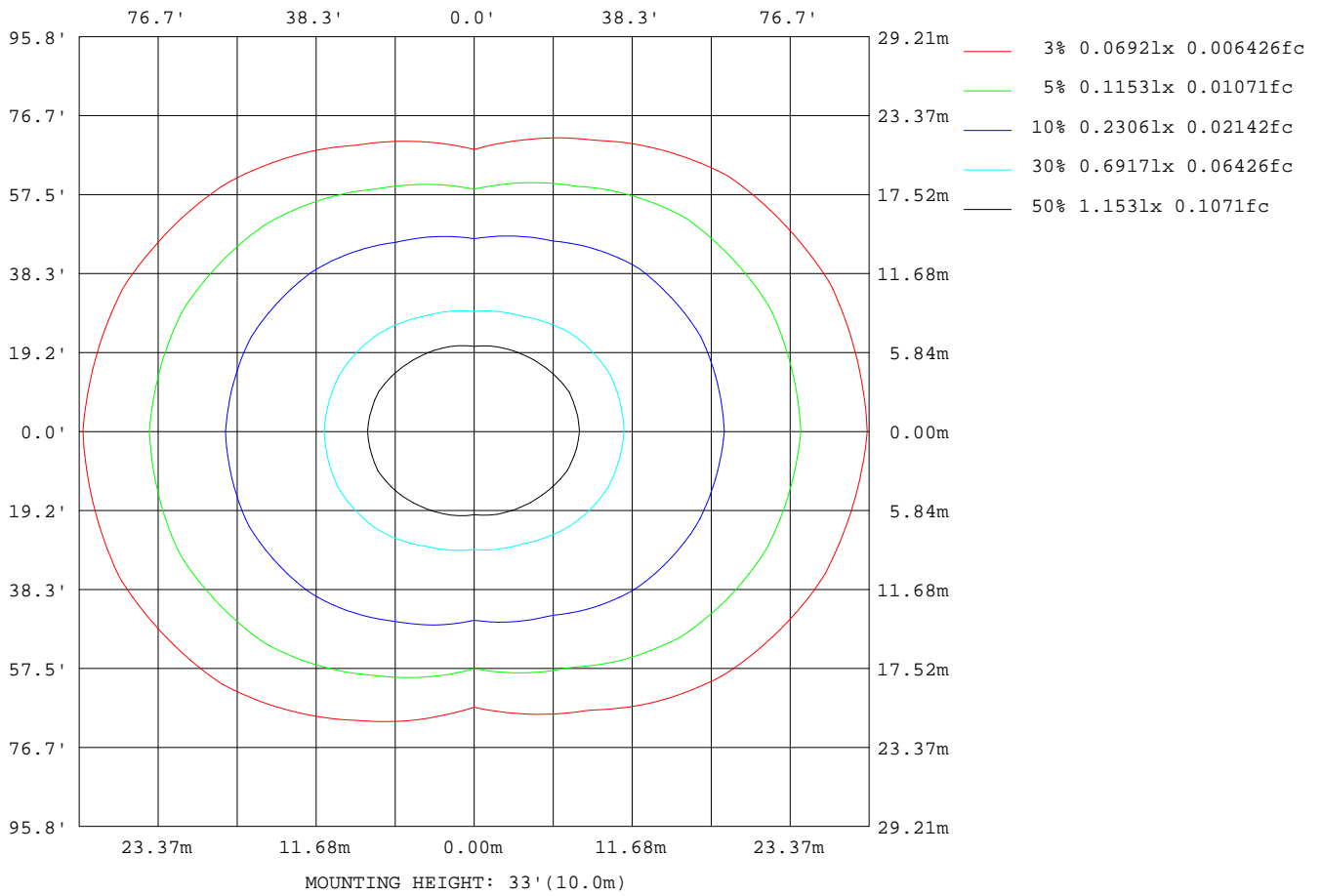
γ Range: 0 - 180DEG
 γ Interval: 0.5DEG
 Test System: EVERFINE GO-R5000_V2 SYSTEM V2.00.444
 Humidity: 60.5%
 Test Distance: 2.617m [K=1.0000]
 Remarks: File No.: WT-F-504-3206-01-A

Checker: Near Gao

Assessor: Akin Xu

ISOLUX DIAGRAM

Test:U:120.17V I:0.2395A P:28.560W PF:0.9919 Freq:60.00Hz Lamp Flux:1584.97x1 lm		
NAME:	TYPE:	WEIGHT:
SPEC.:	DIM.:	SERIAL No.:
MFR.:	SUR.:	Shielding Angle:



C Range: 0 - 360DEG
 C Interval: 22.5DEG
 Test Speed: HIGH
 Temperature:25.1DEG
 Operators:Wilson
 Test Date:2022-12-09

γ Range: 0 - 180DEG
 γ Interval: 0.5DEG
 Test System:EVERFINE GO-R5000_V2 SYSTEM V2.00.444
 Humidity:60.5%
 Test Distance:2.617m [K=1.0000]
 Remarks: File No.: WT-F-504-3206-01-A

Checker: Near Gao

Assessor: Akin Xu

LED Avg.L Report

Test:U:120.17V I:0.2395A P:28.560W PF:0.9919 Freq:60.00Hz Lamp Flux:1584.97x1 lm		
NAME:	TYPE:	WEIGHT:
SPEC.:	DIM.:	SERIAL No.:
MFR.:	SUR.:	Shielding Angle:

AvgL	cd/m2
L_0~180(65)av	6770
L_0~180(75)av	10374
L_0~180(85)av	29554
L_90~270(65)av	2600
L_90~270(75)av	2085
L_90~270(85)av	969
L_45(65)av	5278
L_45(75)av	7410
L_45(85)av	19797

Standard: GB/T 29293-2012

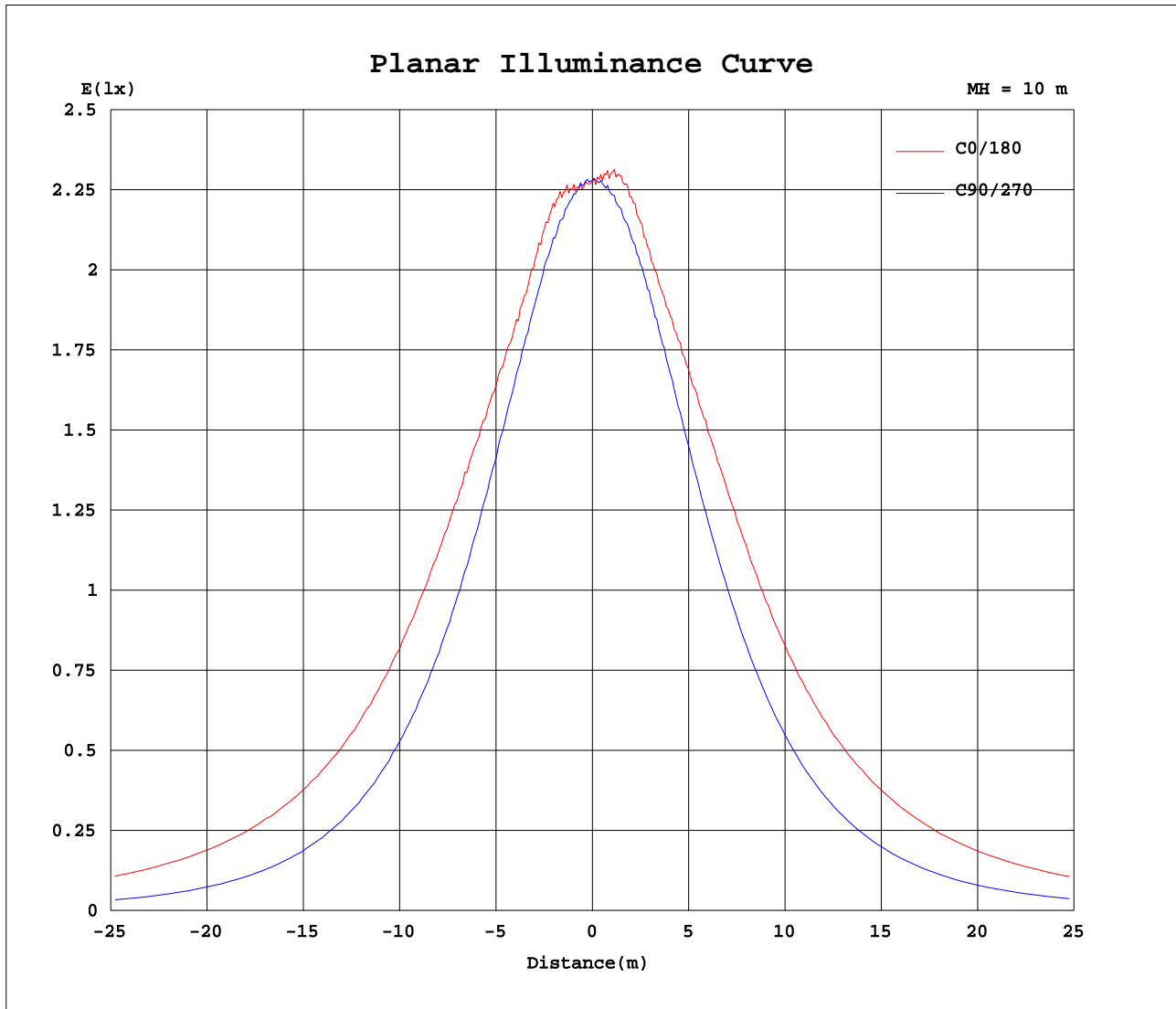
C Range: 0 - 360DEG
 C Interval: 22.5DEG
 Test Speed: HIGH
 Temperature:25.1DEG
 Operators:Wilson
 Test Date:2022-12-09

γ Range: 0 - 180DEG
 γ Interval: 0.5DEG
 Test System:EVERFINE GO-R5000_V2 SYSTEM V2.00.444
 Humidity:60.5%
 Test Distance:2.617m [K=1.0000]
 Remarks: File No.: WT-F-504-3206-01-A

Checker: Near Gao

Assessor: Akin Xu

Planar Illuminance Curve



C Range: 0 - 360DEG
 C Interval: 22.5DEG
 Test Speed: HIGH
 Temperature: 25.1DEG
 Operators: Wilson
 Test Date: 2022-12-09

γ Range: 0 - 180DEG
 γ Interval: 0.5DEG
 Test System: EVERFINE GO-R5000_V2 SYSTEM V2.00.444
 Humidity: 60.5%
 Test Distance: 2.617m [K=1.0000]
 Remarks: File No.: WT-F-504-3206-01-A

Checker: Near Gao

Assessor: Akin Xu

LUMINOUS DISTRIBUTION INTENSITY DATA

Test:U:120.17V I:0.2395A P:28.560W PF:0.9919 Freq:60.00Hz Lamp Flux:1584.97x1 lm		
NAME:	TYPE:	WEIGHT:
SPEC.:	DIM.:	SERIAL No.:
MFR.:	SUR.:	Shielding Angle:

Table--1

UNIT: cd

C(DEG) \ γ (DEG)	0	22.5	45	67.5	90	112.5	135	157.5	180	202.5	225	247.5	270	292.5	315	337.5			
0	228	228	228	228	228	228	228	228	228	228	228	228	228	228	228	228			
5	227	227	227	226	226	228	231	233	231	232	231	229	227	227	228	228			
10	233	231	228	223	224	228	233	236	238	236	233	227	225	226	229	232			
15	231	231	228	221	218	226	232	234	233	234	233	227	220	223	230	233			
20	228	227	223	215	211	221	226	230	232	230	228	223	213	220	226	227			
25	228	224	216	209	201	214	220	230	234	230	222	217	205	214	219	226			
30	233	224	209	199	191	203	214	231	237	231	217	206	195	205	213	226			
35	233	224	204	188	178	192	212	232	239	231	211	196	183	194	210	228			
40	235	224	198	175	165	179	208	229	238	229	206	183	170	181	206	228			
45	231	220	194	161	149	168	203	226	234	224	200	170	155	168	203	226			
50	229	214	186	146	133	155	195	219	228	217	191	156	139	156	196	221			
55	222	207	177	132	115	143	186	213	222	210	182	142	122	144	189	215			
60	216	200	166	118	96.3	129	175	205	214	200	170	128	103	132	179	207			
65	209	191	154	103	76.2	115	165	197	206	192	158	113	83.0	118	169	200			
70	202	183	142	87.6	56.0	99.9	153	189	199	182	145	96.2	62.6	104	158	191			
75	196	174	131	72.3	35.7	85.1	144	182	193	175	134	79.7	42.5	89.0	148	185			
80	192	168	122	58.6	17.6	72.3	136	176	188	167	123	64.1	23.2	75.6	139	178			
85	189	165	118	51.2	4.18	66.2	132	174	185	163	116	53.3	8.05	66.1	134	176			
90	194	170	121	53.3	1.41	68.3	135	178	187	163	115	50.6	1.04	65.6	136	178			
95	199	175	127	58.5	2.43	72.5	139	182	193	170	120	54.9	1.53	70.7	141	185			
100	204	179	130	61.4	4.06	73.8	141	185	195	171	123	57.2	2.79	75.2	146	188			
105	205	181	134	55.1	6.09	66.9	143	185	196	172	125	50.6	4.64	72.3	148	191			
110	205	181	129	47.0	8.37	57.3	134	183	193	169	116	40.3	6.57	64.2	147	190			
115	202	175	117	37.8	10.6	47.3	120	170	184	157	102	32.5	8.67	54.0	135	186			
120	187	159	102	34.4	12.5	41.5	104	152	166	140	88.5	30.2	10.4	44.0	119	169			
125	164	139	85.2	31.0	14.1	39.9	86.9	131	145	122	73.4	29.3	12.0	40.1	101	149			
130	141	117	68.8	32.6	15.7	37.9	69.6	109	122	101	58.0	28.4	13.3	35.8	82.1	125			
135	115	95.1	54.3	31.6	17.6	36.1	56.5	88.5	99.7	80.7	48.3	27.8	15.4	36.9	64.2	103			
140	90.4	74.4	49.7	31.0	20.8	34.5	52.2	67.8	76.9	61.9	45.1	27.2	18.3	35.2	55.2	79.8			
145	67.7	58.8	46.3	30.2	24.0	32.9	48.0	58.5	60.8	54.1	41.9	26.5	20.3	33.5	50.5	61.8			
150	58.1	52.9	42.4	29.6	25.3	29.9	43.4	52.2	54.7	48.9	38.4	26.5	22.8	32.0	45.7	55.3			
155	51.3	47.3	38.8	29.4	26.6	30.7	38.8	45.9	48.2	43.5	34.9	26.9	25.2	30.9	41.1	48.9			
160	44.4	41.4	34.8	28.1	27.1	30.1	34.7	39.2	41.0	37.8	31.8	27.3	25.8	30.3	36.3	42.5			
165	37.5	35.6	31.5	23.4	21.8	27.5	30.5	33.7	34.5	32.9	30.0	26.2	19.7	27.6	32.9	36.1			
170	32.6	31.6	20.6	16.4	17.8	19.1	25.4	30.4	30.7	29.9	28.1	15.4	16.1	23.7	31.0	32.2			
175	29.0	17.6	17.1	19.5	18.7	18.3	18.0	18.8	27.6	26.7	18.8	15.8	17.6	17.6	25.1	29.2			
180	11.0	11.0	11.0	11.0	11.0	11.0	11.0	11.0	11.0	11.0	11.0	11.0	11.0	11.0	11.0	11.0			

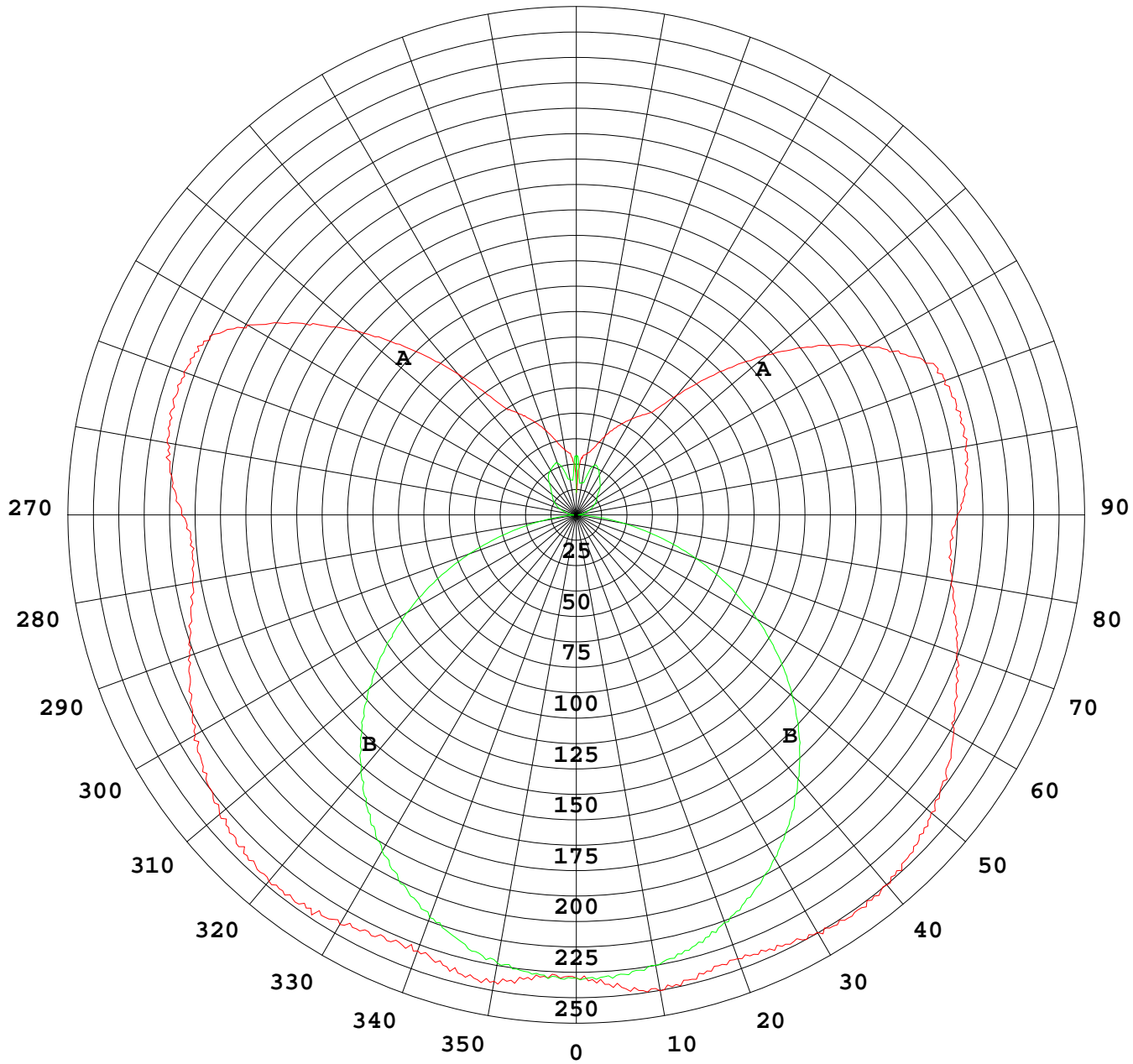
C Range: 0 - 360DEG
 C Interval: 22.5DEG
 Test Speed: HIGH
 Temperature:25.1DEG
 Operators:Wilson
 Test Date:2022-12-09

γ Range: 0 - 180DEG
 γ Interval: 0.5DEG
 Test System:EVERFINE GO-R5000_V2 SYSTEM V2.00.444
 Humidity:60.5%
 Test Distance:2.617m [K=1.0000]
 Remarks: File No.: WT-F-504-3206-01-A

Checker: Near Gao

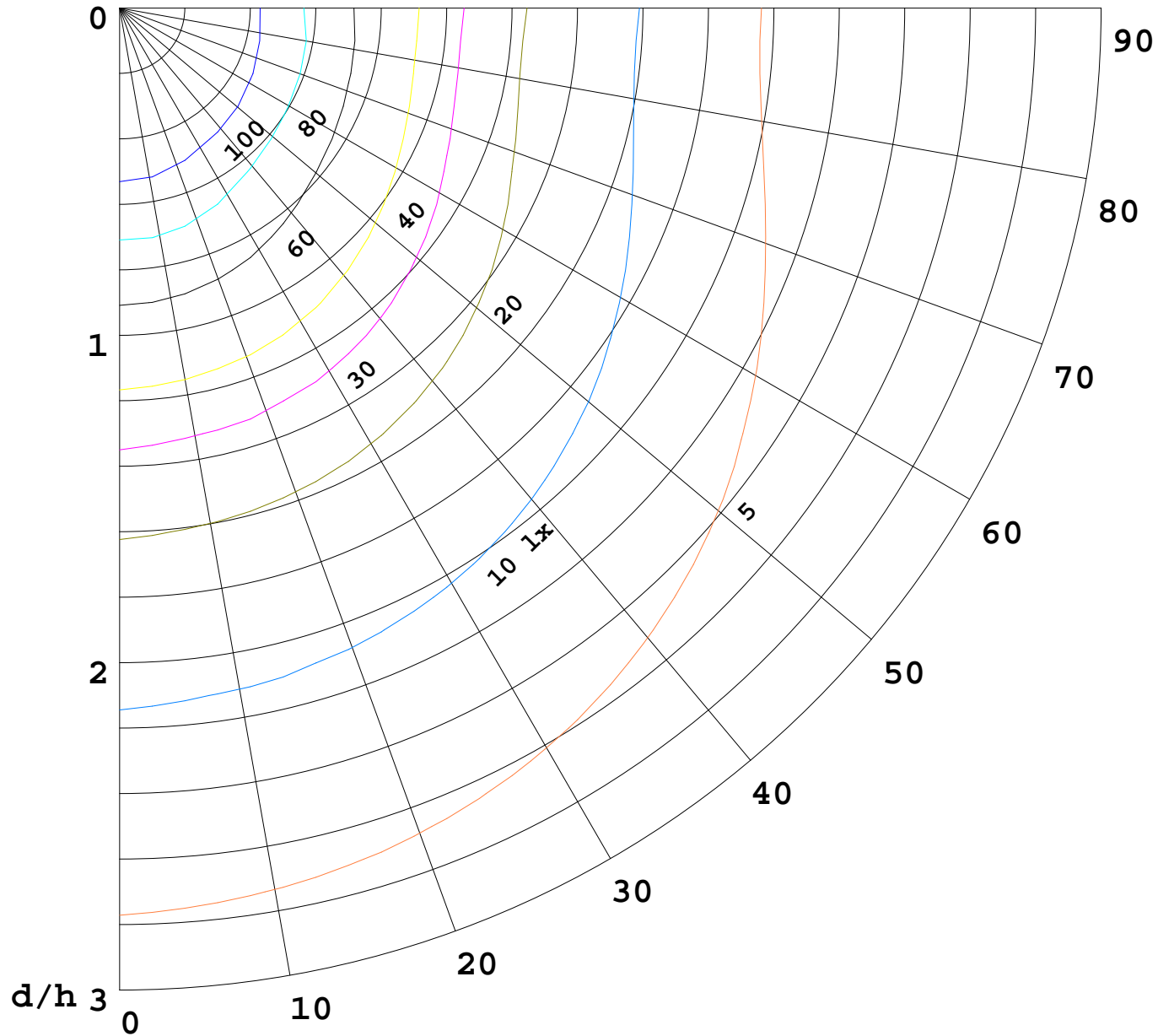
Assessor: Akin Xu

I(cd)



1000 lm

$K = 1$



F = 1000 lm
K = 0.7
Hcc = 0.8 m
Hfc = 0.0 m
Eave = 100 lx

	Pcc	Pw	Pfc
—————	70	50	30
—————	50	30	20

